

## MeesPierson Reads Taxation Services

For this edition of the magazine we have decided to depart from our usual technical article and look instead at the services we can offer and introduce you to the team of directors we have leading MPR Private Clients Limited.

### The Service:

As one of the largest firms of Chartered Tax Advisers in Guernsey we have 17 tax specialists and support staff offering a comprehensive service, particularly in relation to Guernsey and UK taxation matters. Although based in Guernsey most of our team have either come from UK practice or have qualified as UK tax advisors and through years of practical experience dealing with the UK and Guernsey tax authorities we have developed a significant level of expertise advising on Guernsey tax compliance; UK tax compliance; UK emigration and immigration issues; residence and domicile planning; UK property structuring; estate planning and many other areas. We are also part of the international accountancy group BDO and as such have access to advisors across the world to assist with complex international tax planning.

### The Team:



**Paul Schreiberke**  
Managing Director

Paul joined the MeesPierson Reads Group in 1991 from a Big 4 London firm and was appointed a Director in May 1999. Paul is a member of the Chartered Institute of Taxation and the Society of Trust & Estate

Practitioners. Within the MeesPierson Reads Group Paul has responsibility for trust tax matters, dealing with both in-house trusts and companies and also advising local banks and other trust companies.



**Michael Ayre**  
Director

Michael joined the Group in 1987 from a Big 4 London firm and was appointed as a Manager within the Tax Department in 1988 and a Partner in 1991. Michael is a member of the Chartered Institute of Taxation

and the Chartered Association of Certified Accountants. In addition to advising upon the structuring of clients' financial and taxation affairs upon their emigration from the UK, Michael is CEO of the MeesPierson Reads Group and Chairman of the Management Board.

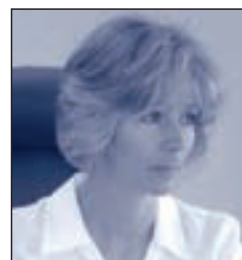
**Simon Graham**  
Director

Simon joined the Group in 1992 and moved to the Tax Department in 1995. Simon was made a Manager of the Tax Department in 1999 and Director of Trust and Tax in 2003. Simon is a member of the Chartered Institute of Taxation and has 13 years of experience in the tax and trust business specialising in advising high net worth individuals and UK property structuring. Simon is the current co-editor of the Guernsey section of Tolley's "Taxation in the Channel Islands and the Isle of Man" his co-editor, Neil Dorey, is also employed by the Group as one of our three Tax Managers.



**Jane Le Maitre**  
Director

Jane qualified as a Chartered Accountant in 1987 with a Big 4 UK firm of accountants and went on to become a member of the Chartered Institute of Taxation in 1989. She moved to Guernsey in the same year and became a partner in a firm of Guernsey accountants with responsibility for private client (UK and Guernsey) tax planning and management of a large and varied portfolio of offshore trust and companies for high net worth individuals. In 1995 Jane also became a member of the Society of Trust and Estate Practitioners. In 2000 Jane joined the fiduciary division of a Guernsey bank and quickly became an Executive Director of the Bank's Trust Company and Head of the Tax Services Group. Jane joined MeesPierson Reads Group as a Trust and Tax Director in the Private Clients Group in 2005.



In addition to our tax services the Group is also able to offer full banking, investment and trust services. Anyone seeking further information should contact either Simon Graham, in the first instance, or the MeesPierson Reads director or manager with whom you normally deal.